

OPTONICA

Wall Mounted Touch Panel

SKU: 6376/ 6377

4 Zone/1-4 color/Glass touch panel/Color wheel/AC input/DMX 512 and RF 2.4G signal output



6376



6377

Features

- Touch panel 4 zone 1-4 color DMX512 master, can also be used as 4 zone 1-4 color RF remote.
- DMX signal output, comply to standard DMX512 protocol, compatible with DMX decoder from any supplier.
- When used as RF remote, each zone can remote control multiple RF 2.4G LED controllers.
- Ultra sensitive high strength glass touch panel with touch color wheel in the middle.
- Smooth and accurate color adjustment by touching the color wheel.
- Touch keys with LED indicator.
- White & Black glass panel available.

Technical Parameters

| | |
|---------------------------|------------|
| Model No. | 6376/ 6377 |
| Light type | Dual color |
| Output DMX channel number | 8 |

| Input and Output | |
|------------------|-------------------|
| Input voltage | 100-240VAC |
| Input current | Max 0.1A |
| Output signal | DMX512, RF 2.4GHz |

| Safety and EMC | |
|-----------------------|---|
| EMC standard [EMC] | ETSI EN 301 489-1 V2.2.3 ETSI EN 301 489-17 V3.2.4 |
| Safety standard [LVD] | EN 62368-1:2020+A11:2020 |
| Radio Equipment [RED] | ETSI EN 300 328 V2.2.2 |
| Certification | CE, EMC, LVD, RED |

| Warranty | |
|----------|---------|
| Warranty | 3 years |

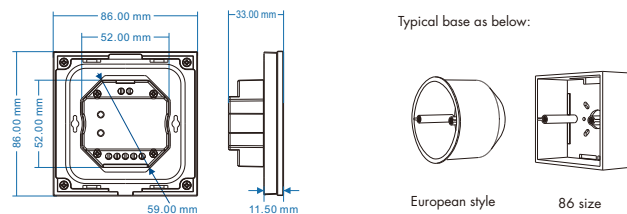
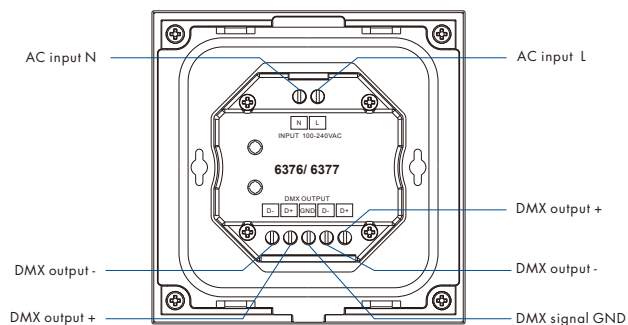
| Dimming data | |
|---------------------|--------------------------|
| Input signal | Touch key + RF 2.4GHz |
| RF Control distance | 10m [Barrier-free space] |
| Dimming level | 256 levels |
| Dimming range | 0-100% |

| Environment | |
|-------------------------|-------------------|
| Operation temperature | Ta: -30°C ~ +55°C |
| Case temperature [Max.] | Tc: +65°C |
| IP rating | IP20 |

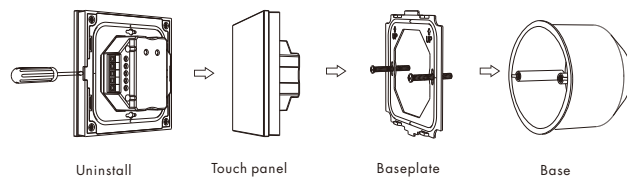
| Weight | |
|--------------|---------|
| Net weight | 0.181kg |
| Gross weight | 0.234kg |

CE RoHS LVD RED

Mechanical Structures and Installations



Installation diagram:



Key function

6376/ 6377 Dual color panel



- Turn on/off all zone light.
- Brightness, 10 levels.
- Color temperature wheel.

1 2 3 4

Short press turn on zone light and select zone simultaneously, long press 2s turn off zone light.
4 zone control separately or synchronously, each zone could control multiple receivers.

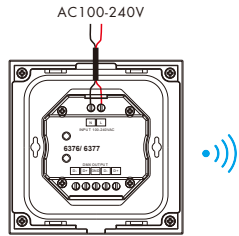
Turn on key tone: Long press power key for 5s when all zone light is off, will turn on or turn off key tone.

Touch Panel work as DMX512 Master

After connect with DMX decoders, please set the DMX decoders address as below:

| SKU | 6376/ 6377 | |
|------------------------------|------------|----|
| | WW | WH |
| Zone 1 DMX decoder's address | 1 | 2 |
| Zone 2 DMX decoder's address | 3 | 4 |
| Zone 3 DMX decoder's address | 5 | 6 |
| Zone 4 DMX decoder's address | 7 | 8 |

Wiring Diagram for touch panel work as RF remote



Malfunctions analysis & troubleshooting

| Malfunctions | Causes | Troubleshooting |
|--------------|---|---|
| No light | 1. No power. 2. Wrong connection or insecure. | 1. Check the power. 2. Check the connection. |
| Wrong color | 1. DMX decoder first address error. 2. Wrong connection of output wires. | 1. Check the DMX first address. 2. Reconnect output wires. |

Touch Panel work as DMX512 master match RF remote

Touch panel 4 zone DMX512 master can also match with 4 zone RF remote [Optional].

End user can choose the suitable match/delete ways. Two options are offered for selection:

Use On/Off key

Match:

Turn on light, turn off, immediately press the On/Off key of the panel for 5s, then press any zone key of the RF remote within 5s. The LED indicator fast flash 3 times means match is successful.

Delete:

Turn on light, turn off, immediately press the On/Off key of the panel for 10s to delete all match, The LED indicator fast flash 6 times means all matched remotes were deleted.

Use Power Restart

Match:

Switch off the power of the panel, then switch on power, repeat again. Immediately short press any zone key 3 times on the remote. The LED indicator fast flash 3 times means match is successful.

Delete:

Switch off the power of the panel, then switch on power, repeat again. Immediately short press any zone key 5 times on the remote. The LED indicator fast flash 6 times means all matched remotes were deleted.

Touch Panel work as RF remote

Touch panel 4 zone remote can match with RF controller for the corresponding light type.

End user can choose the suitable match/delete ways. Two options are offered for selection:

Use the controller's Match key

Match:

Short press match key, immediately press zone key of the touch panel. The LED indicator fast flash a few times means match is successful.

Delete:

Press and hold match key for 5s to delete all match, The LED indicator fast flash a few times means all matched remotes were deleted.

Use Power Restart

Match:

Switch off the power of the receiver, then switch on power, repeat again. Immediately short press zone key 3 times on the touch panel. The light blinks 3 times means match is successful.

Delete:

Switch off the power of the receiver, then switch on power, repeat again. Immediately short press zone key 5 times on the touch panel. The light blinks 5 times means all matched remotes were deleted.