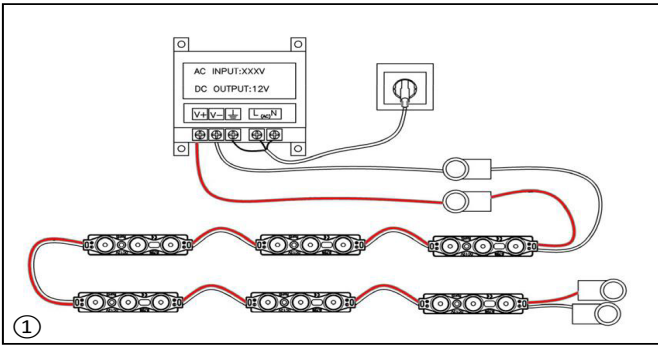
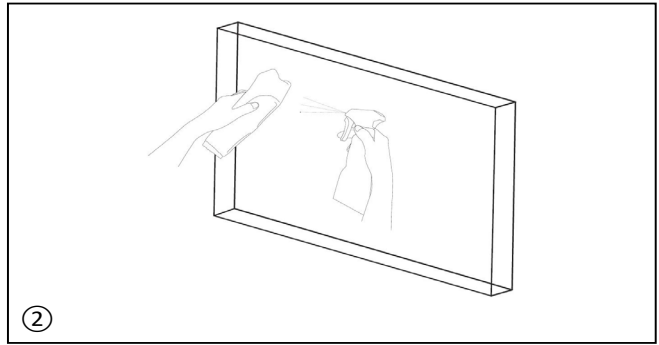


# OPTONICA

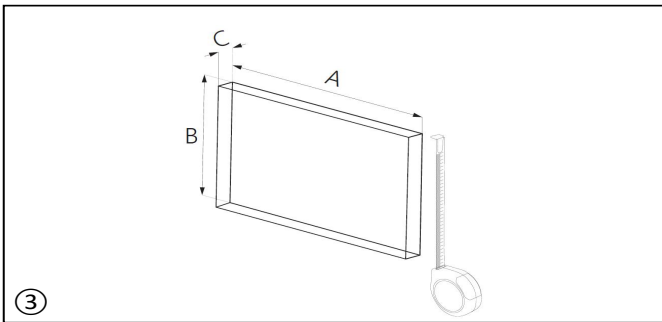
## Installation Steps:



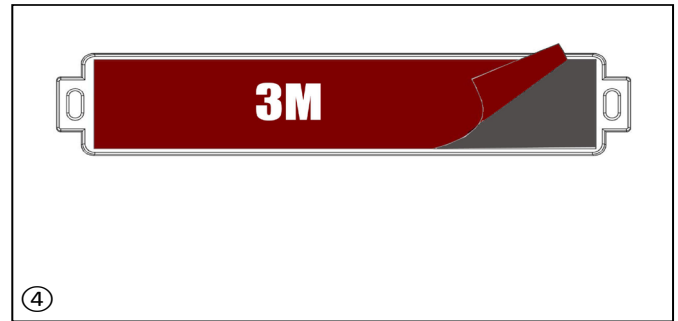
Before installation, check the entire chain of LED modules for light intensity and color consistency.



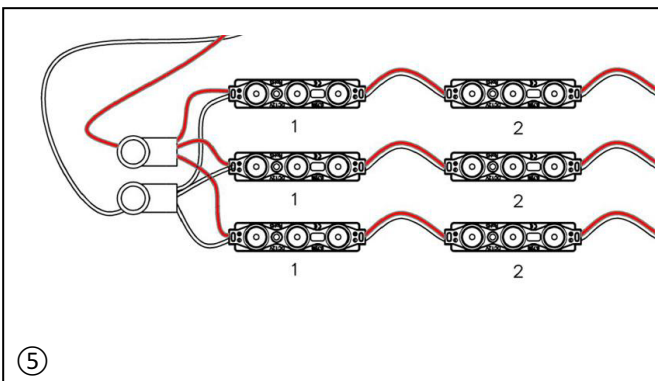
Clean the mounting surface with degreasing agent.



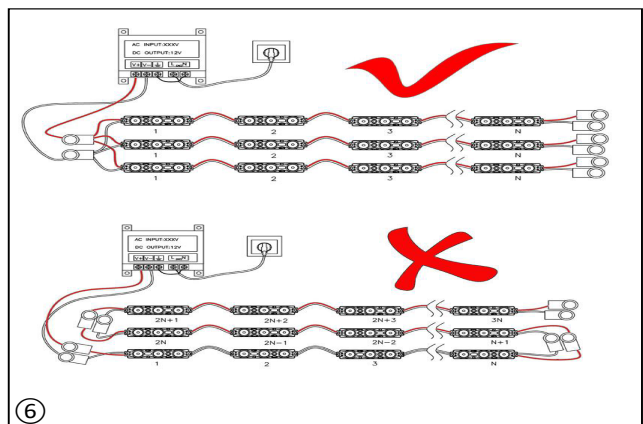
Set the right modules spacing. Consider the size of the box or channel letter mainly depth, the front face material type and desired lighting effect. If it is necessary, you can wrap the wires and dense the LED modules pitch.



Arrange LED modules. Peel of the release paper of double-sided adhesive tapes. Then stick modules on the installing surface for preliminary mounging. Note: The adhesive tape is dor auxiliary assembly only.



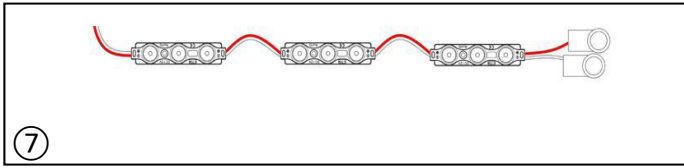
Connect LED modules to each other by connectors UY2 compliant with IP67. Note: be sure not to exceed the permitted number of LED modules in the chain.



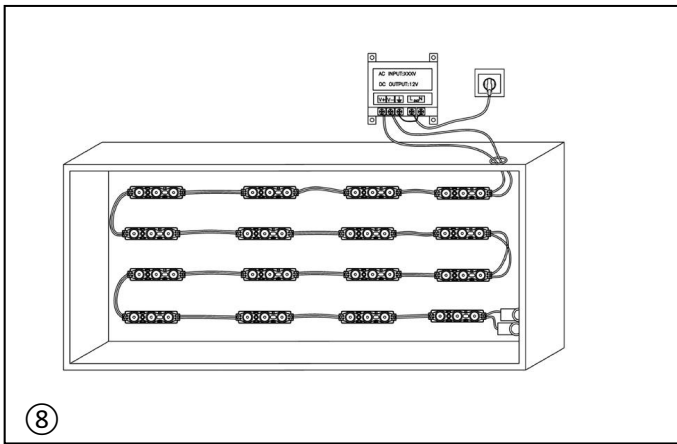
Connect the module circuitry to the proper power supply until.

Note: Refer to the product data sheet for maximum allowed number of modules in a chain. Please ensure "+" & "-" of the LED modules wire are connected with power supply correctly.

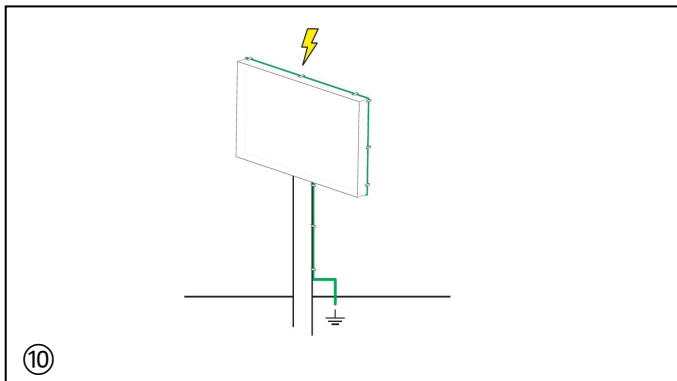
# OPTONICA



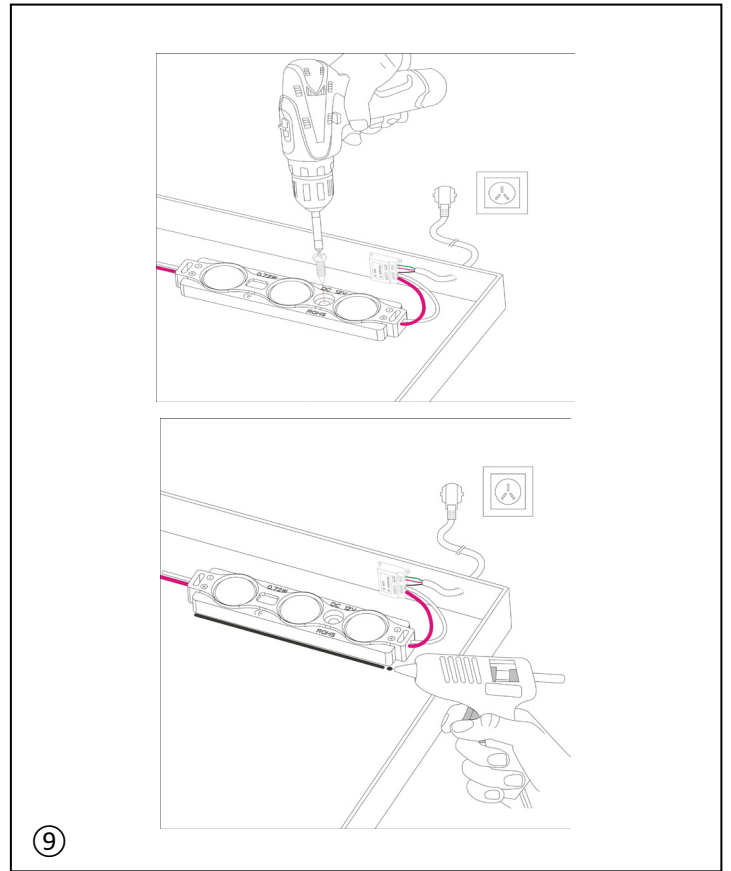
Isolate the free wires with IP67 certified connectors.  
Notes: Check the cables for short circuits.



Switch on the power and verify the lighting effect.



The light box / Channel letter body shall be grounded.  
Notes: Fail to ground the body might endanger the ESD shock with leads to module destruction.



Fasten the modules and the wires permanently by screwing, riveting or the special glue.  
Notes: Make sure your system is unplugged.