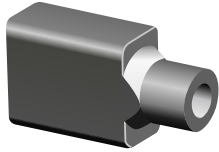


# OPTONICA

## Feature:

- ◎ Side view neon LED strip can be bent along the side perpendicular to the light emitting side.
- ◎ Linear light source without light dot, soft and uniform luminance.
- ◎ Multi colors are available: red, orange, yellow, green, ice blue, blue, pink, purple, white, warm white.
- ◎ Modified silicone tube with good waterproof performance.
- ◎ Resistant against UV radiation and chemicals.
- ◎ Can be segmented using cut, easy to install
- ◎ Widely applied in building decorations, advertisement sign, theme park etc.

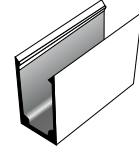
## Accessories available:



Direct Cable Output

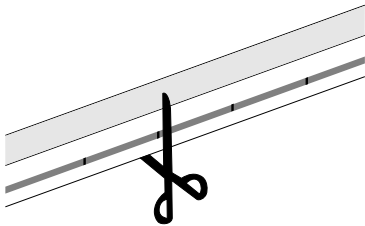


End Cap

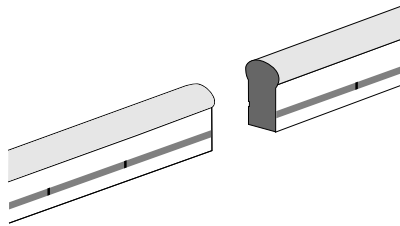


Aluminum Mounting

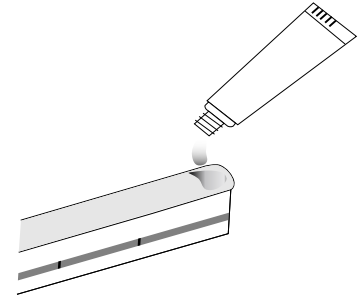
## Cutting and seal the end:



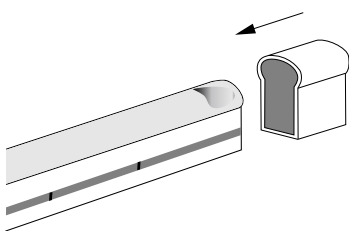
Cut the neon strip along the cutting line which appears as a black dot at the side.



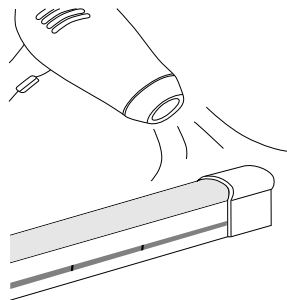
The strip is cutted into two parts.



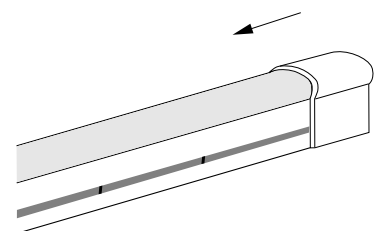
Put some glue at the end.



Put on the end cap.

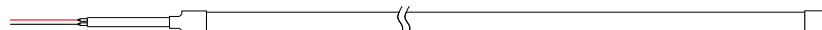
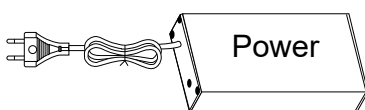


Drying naturally or by hot wind to make sure the end cap fixed asten and sealed.



End cap installation finished.

## Connect with power:



Red wire is +, black wire is -

- Note: 1. To ensure uniform illumination and optimal working conditions, use 12V power in every 5m length of the product.  
2. Please make sure the "+" and "-" of the product input correctly connected to those of the power supply output.